

# QPS2-1980-2010-R

## SPDT, 1.98~2.01GHz, Reflective

**Features:**

- \* Low Insertion Loss
- \* High Isolation

**Applications:**

- \* Wireless
- \* Transmitter
- \* Laboratory Test
- \* Radar

**Electrical**

|                  |                                |
|------------------|--------------------------------|
| Frequency:       | 1.98~2.01GHz                   |
| Insertion Loss:  | 0.6dB max.                     |
| Isolation:       | 30dB min.                      |
| VSWR:            | 1.5 max.                       |
| Average Power:   | 100W                           |
| Impedance:       | 50Ω                            |
| Voltage/Current: | +5V/500mA max.                 |
| Control:         | TTL High - 1<br>TTL Low/NC - 0 |

**Mechanical**

|                                    |                                   |
|------------------------------------|-----------------------------------|
| Size*1:                            | 40*35*20mm<br>1.575*1.378*0.787in |
| RF Connectors:                     | SMA Female                        |
| Power Supply & Control Connectors: | Feed Through/Terminal Post        |

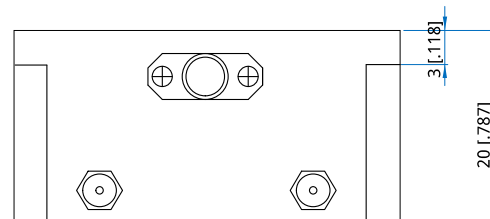
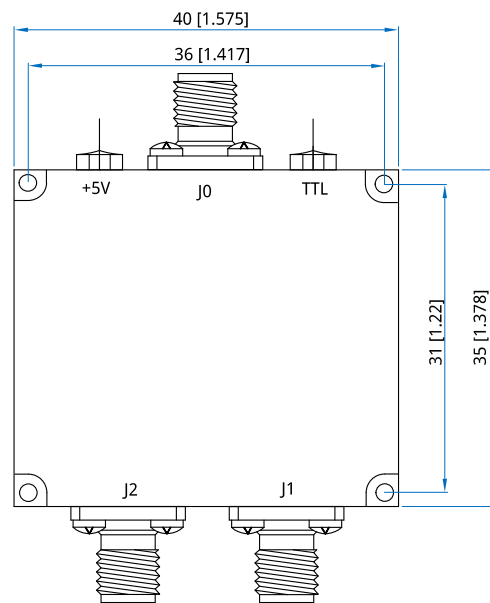
[1] Exclude connectors.

**Environmental**

|                            |            |
|----------------------------|------------|
| Operating Temperature:     | -40~+85°C  |
| Non-operating Temperature: | -55~+125°C |

**Control True Table**

| Ctrl | Connection              |
|------|-------------------------|
| 0    | J0 - J2 On, J0 - J1 Off |
| 1    | J0 - J1 On, J0 - J2 Off |

**Outline Drawings**


Unit: mm [in]

Tolerance: ±0.2mm [±0.008in]

**How To Order**

**QPS2-1980-2010-R**

Customization is available upon request.